



## **STANDARD 30A: STORAGE CABINETS**

### **(Patos, Breezeways, and Balconies)**

**FEBRUARY 1985**

**REVISED JUNE 2002, RESOLUTION M3-02-29**

**GENERAL REQUIREMENTS REVISED APRIL 2011, RESOLUTION 03-11-49**

**GENERAL REQUIREMENTS REVISED JANUARY 2018, RESOLUTION 03-18-12**

**REVISED FEBRUARY 2019, RESOLUTION 03-19-19**

#### **1.0 GENERAL REQUIREMENTS**

See Standard Section 1: General Requirements

#### **2.0 GENERAL CONDITIONS**

**This Standard is pertinent to storage cabinets in breezeways, balconies, and patios. For information regarding storage cabinets in parking areas, see Standard 30B: Cabinets; Parking Area Storage.**

- 2.1** Cabinets shall be positively attached to adjacent wall or structure to prevent overturning as required by the International Building Code.
- 2.2** A 12" access shall be maintained between cabinets and existing plumbing. No electrical wiring shall be run through the cabinet.
- 2.3** No loose items are allowed outside of storage cabinets. All personal property, including foot lockers, file cabinets, trunks and work benches shall be stored in cabinets and shall not violate use restrictions set forth in Article III of Declaration of Covenants, Conditions, and Restrictions.
- 2.4** A Mutual Consent will not be required for cabinets which are located within patios or balconies provided they are not visible from common area. Maximum of two cabinets per patio or balcony is permissible.

#### **3.0 PATIO CABINETS**

- 3.1** Cabinet height shall not exceed the height of the patio walls.
- 3.2** Cabinets may be limited to two per patio.

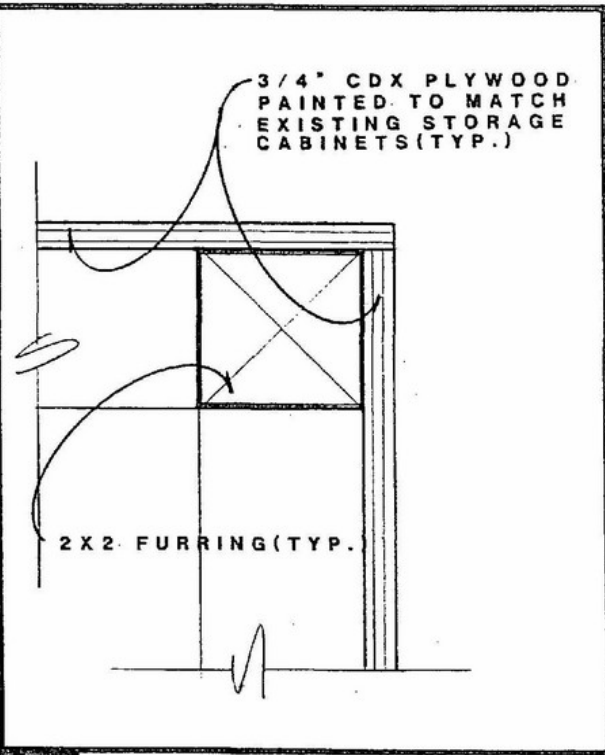
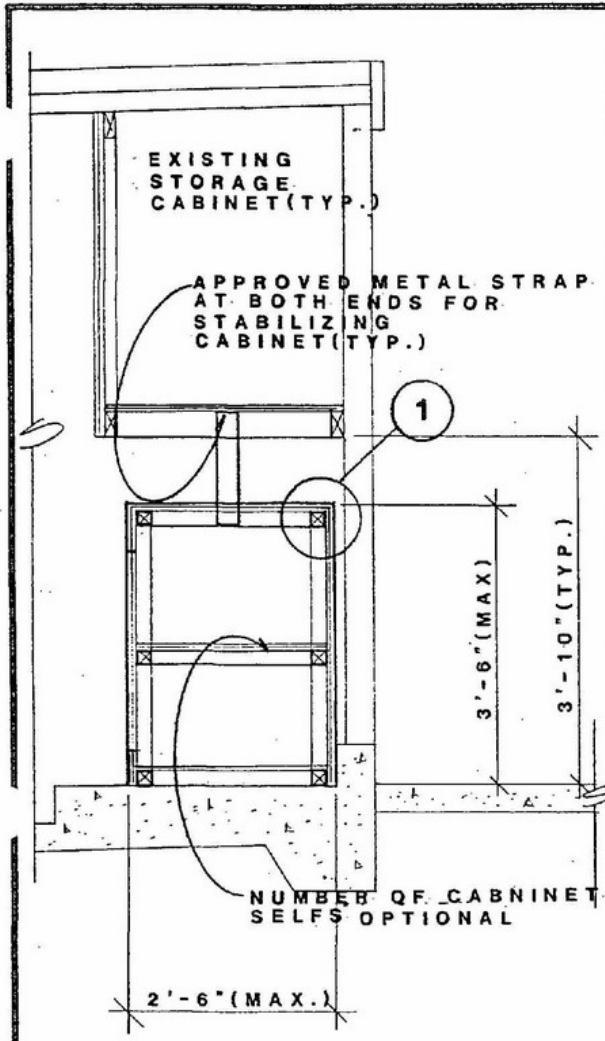
#### **4.0 BREEZEWAY CABINETS**

All storage cabinets in breezeways require a Mutual Consent issued by the Alterations Division prior to installation.

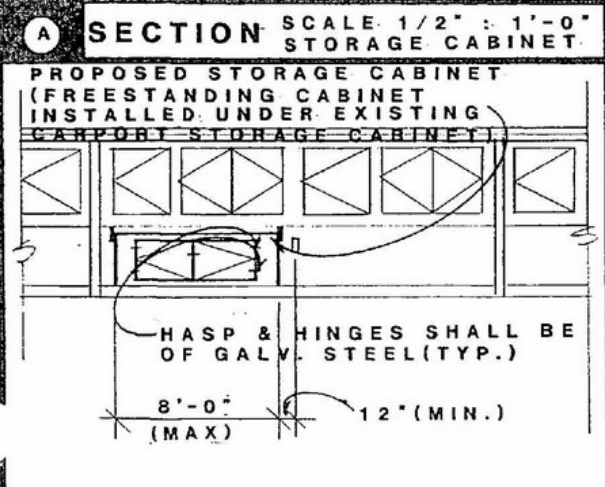
- 4.1 Breezeway cabinets will be permitted in Casa Linda (11-06 type), Casa Contenta (KK-08 type), and Casa Vista (II06) buildings only.
- 4.2 The cabinet shall be no taller than 6', no wider than 3'-0", nor deeper than 1'-6".
- 4.3 Breezeway cabinets will be limited to two, based upon available space. Available space shall be divided equally among adjacent units.
- 4.4 Cabinet units will be placed under stairwell area as indicated on attached drawing. All cabinets shall be legibly labeled with the manor number.
- 4.5 Cabinets shall be consistent in appearance; colors shall coordinate with adjacent buildings.
- 4.6 The cabinet shall be placed on lockable casters.

#### **5.0 BALCONY CABINETS**

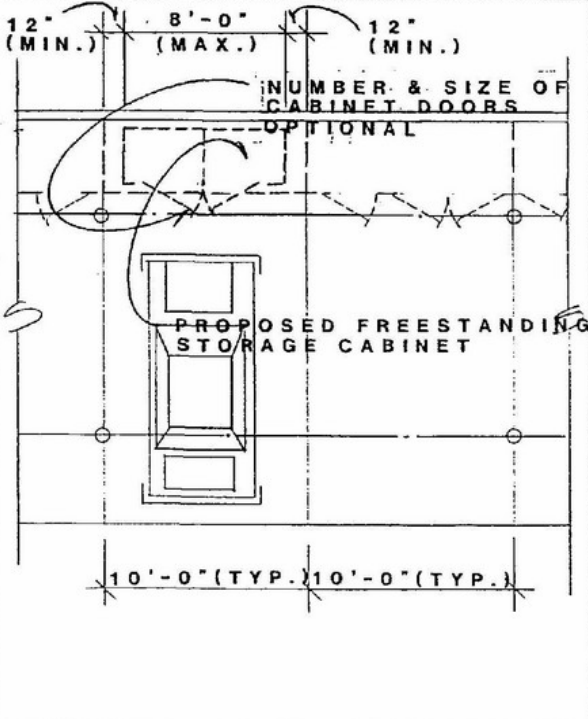
- 5.1 Cabinets located on a balcony will be limited to one. Cabinets are not allowed along railings without balcony railing paneling. Cabinet heights may not exceed the height of the balcony railing. Cabinets against the building shall not exceed 6' in height.



**1** SCALE: NONE  
**DETAIL** CORNER CONSTRUCTION



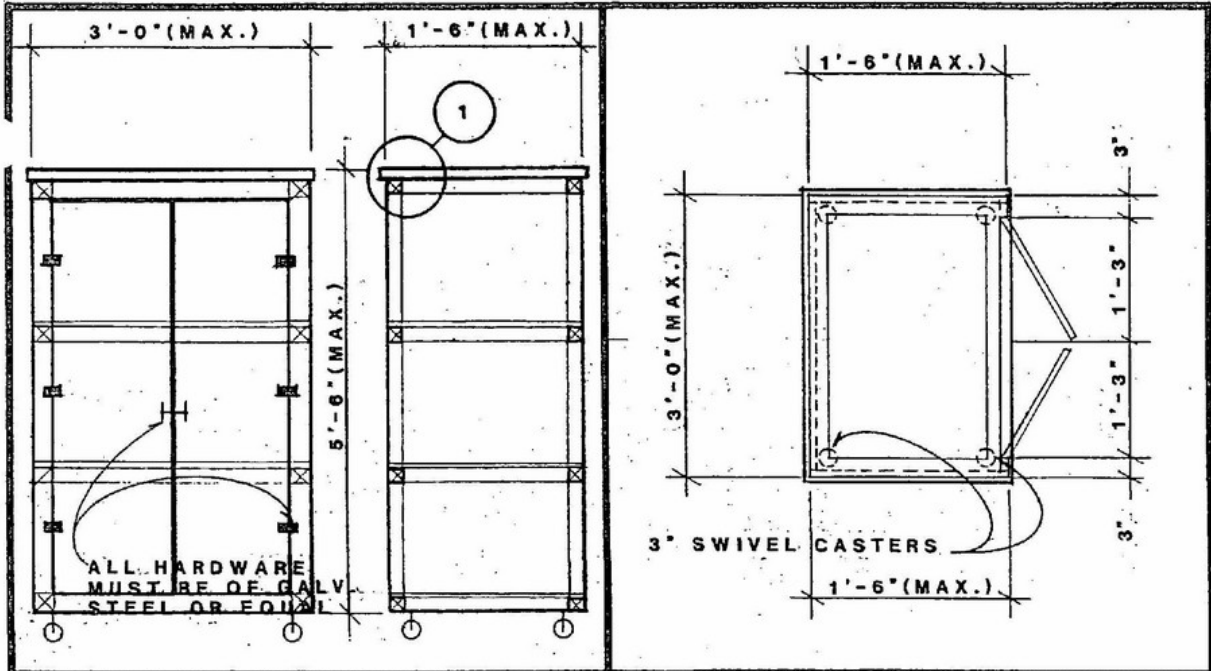
**A** SCALE: 1/2" : 1'-0"  
**SECTION** STORAGE CABINET



SCALE: 1/8" : 1'-0"  
**PLAN VIEW** TYPICAL CARPORT

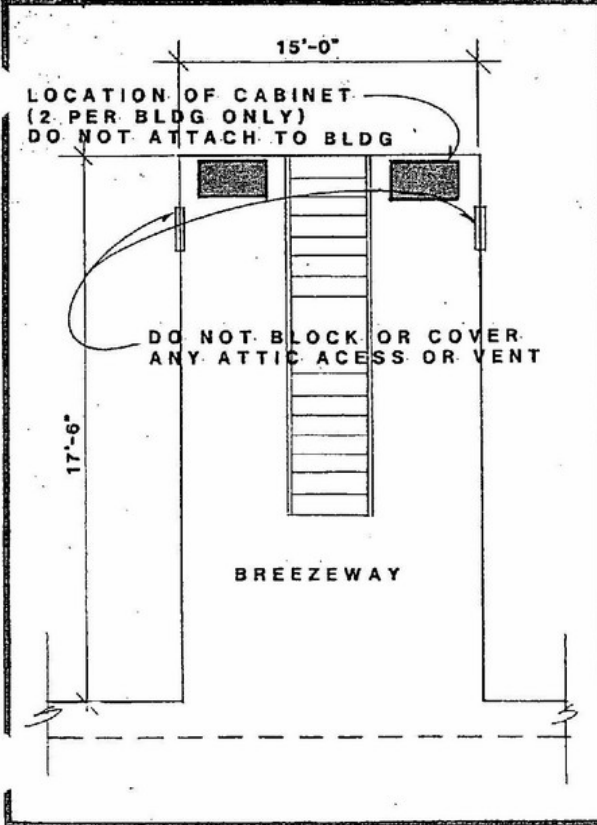
**CARPORT STORAGE CABINET**  
 MAY 19 1982

11-06 BLDG

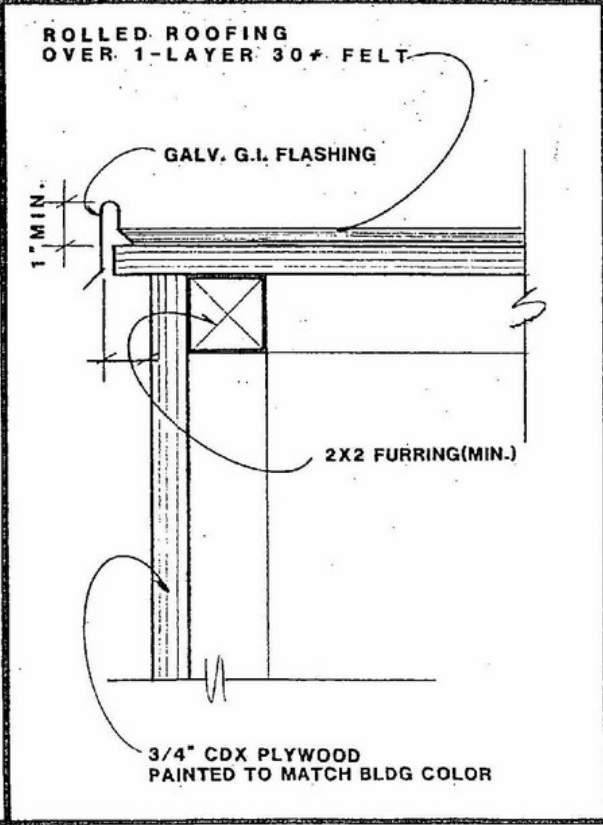


**A SECTION** SCALE 1/2" : 1'-0"

**CABINET PLAN** SCALE 1/2" : 1'-0"

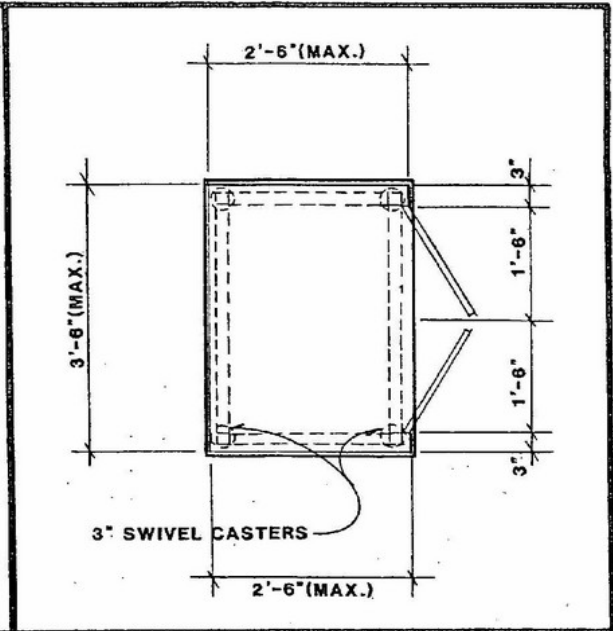
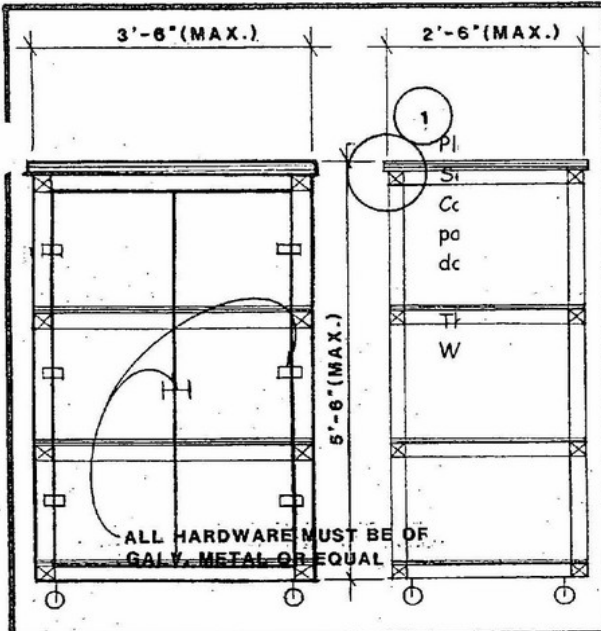


**BREEZEWAY PLAN** SCALE 1/8 : 1'-0"



**1 DETAIL** SCALE 3" : 1'-0"

**BREEZEWAY STORAGE CABINET**  
JUNE 3, 1992



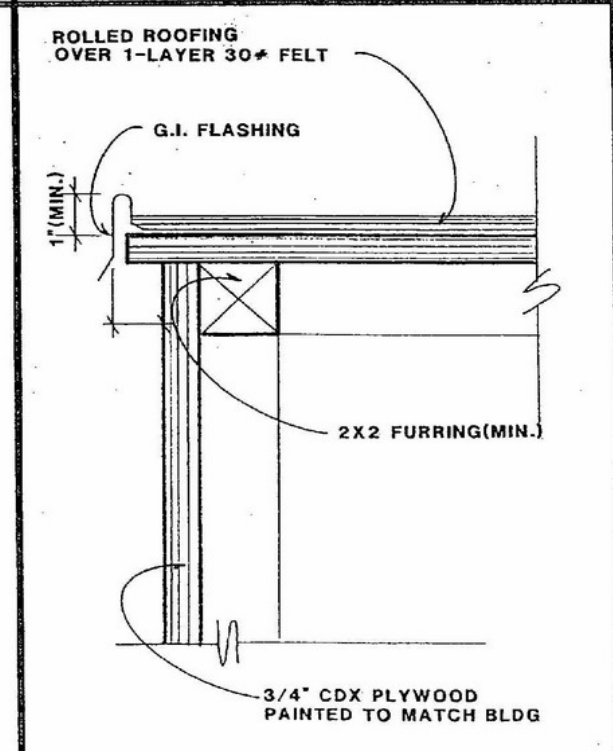
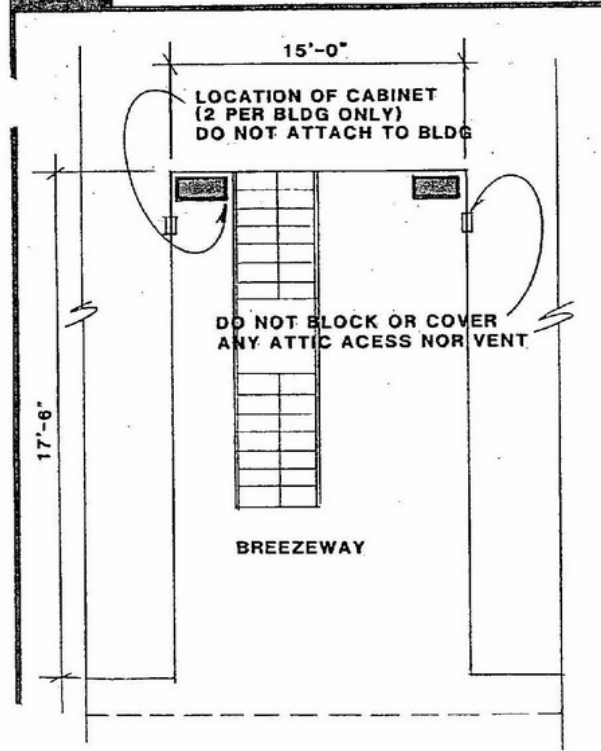
A

SECTION

SCALE 1/2" : 1'-0"

CABINET PLAN

SCALE 1/2" : 1'-0"



BREEZEWAY PLAN

SCALE 1/8" : 1'-0"

1

DETAIL

SCALE 3" : 1'-0"

BREEZEWAY STORAGE CABINET

JUNE 5, 1992